

**SOPHOS**

Security made simple.



# Sophos PureMessage for Microsoft Exchange

Antivirus and anti-spam protection for your  
Microsoft Exchange servers

Sophos PureMessage for Microsoft Exchange guards against email-borne threats such as spam, phishing, viruses and spyware. Control information sent and received both internally and externally. Protect your company against the loss of confidential information or inappropriate use of the email system.

## Key benefits

- ▶ Detects, disinfects, deletes or quarantines viruses, spyware, Trojans and worms
- ▶ Blocks up to 98% of spam and protects against email scams, including phishing attacks
- ▶ Employs Genotype technology to catch evolving spam campaigns and new virus variants
- ▶ Provides consistent and automatic email policy enforcement
- ▶ Prevents confidential and sensitive information being emailed out of the organization
- ▶ Controls attachment types contained within inbound, outbound and internal email
- ▶ Uniquely identifies archives, executables, music and video formats, using true file type recognition
- ▶ Integrates seamlessly with Microsoft Exchange without compromising performance or integrity
- ▶ Manages multiple Exchange or IIS servers and email policy from one console
- ▶ Enables the use of Active Directory users and groups within email policy
- ▶ Provides insight into email traffic profile and threat protection through a real-time dashboard
- ▶ Uses an end-user spam quarantine for quick retrieval of legitimate messages
- ▶ Updates automatically with the latest protection from SophosLabs
- ▶ Includes **24/7 certified expert support**. Contact us anytime for one-to-one assistance

## Comprehensive multithreat protection

**Prevent viruses** Genotype virus detection technology proactively blocks families of viruses even before specific virus signatures are available.

**Code scanning** A range of technologies, including Dynamic Code Analysis, pattern matching emulation and heuristics, automatically check for malicious code.

**Detect and quarantine** Proactively block families of spam campaigns. Our genotype spam detection technology detects up to 98% of spam. The intuitive end-user interface and spam digests allows you to review quarantine contents.

**Spam blocking** The comprehensive multilanguage spam engine is constantly updated with new spam rules by SophosLabs.

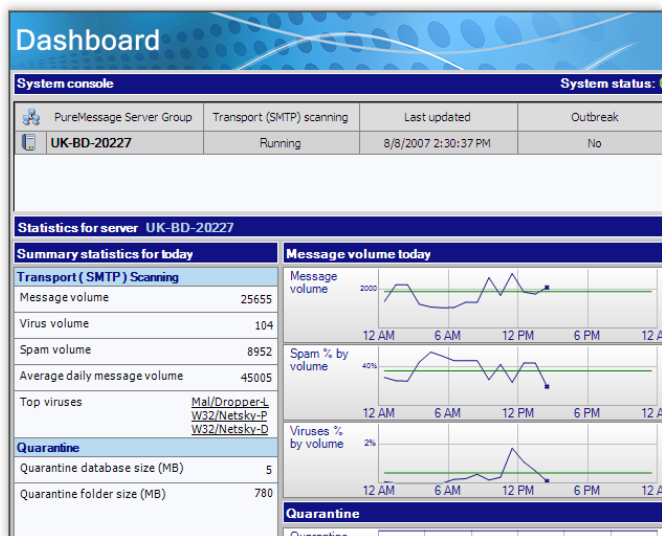
## Central management from a single console

**Centralized management** PureMessage provides an intuitive management console. Manage single or multiple Exchange server deployments from one location.

**Activity monitoring** You can quickly view the status of your servers, email throughput and quarantine areas, via the email security dashboard and activity monitor.

**Cluster support** A cluster-aware service within PureMessage provides you with support for Active/Passive Exchange clusters.

## Manage single or multiple Exchange server deployments—from one location.



## Corporate policy enforcement

**Customizable policies** Our policy engine allows you to set email policies to be configured for a specific email direction—inbound, outbound and internal.

**Configurable user rules** Integration with Microsoft Active Directory allows you to setup email policy rules for specific users and groups.

**Available policies** Ready-to-use policies can block all file types known to carry potential threats or monitor emails containing offensive language.

**Keyword search** Define your policies to search for phrases or regular expressions within emails and attachments, including all common office file formats.

**Secured information** Take advantage of consistent email policy enforcement. Prevent confidential or sensitive information from being accidentally or maliciously emailed outside or within your organization.

## Comprehensive reporting and analysis

**Visual reporting** A graphical report tool lets you create configurable management reports, highlighting trends and any areas of concern.

**Data analysis** You can easily export report data for further analysis or inclusion into wider management reports.

## Industry-leading expertise 24/7

**Access our experts** Our 24/7 support is highly acclaimed. SophosLabs—our global network of threat analysis centers—provides a rapid response to emerging and evolving threats.

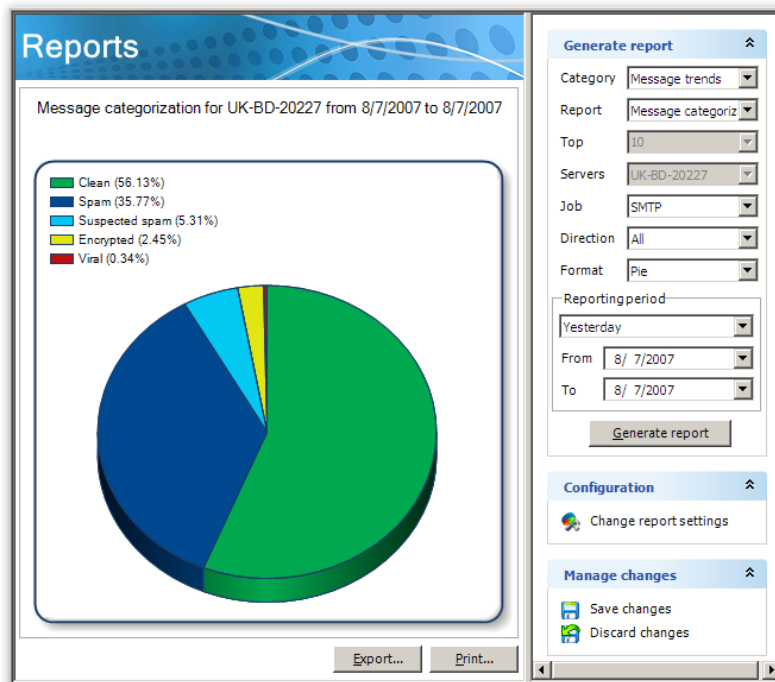
## Languages available

English, Japanese

## Licensing

How you buy Sophos Protection for Microsoft Exchange is up to you. It's included in all of our Endpoint Protection licenses, Sophos Protection Suites and our Email Protection—Advanced. Or buy it separately—your choice. [Compare](#).

**Our graphical reporting tool** lets you create configurable management reports, highlighting trends and areas of concern.





## What you need

### Console

#### Operating systems

- PureMessage Exchange 2003/2007/2010
  - Windows XP/2003 and above
- PureMessage Exchange 2013
  - Windows Vista and above (64-bit only)

#### Memory

- 512 MB minimum, 1 GB recommended

#### Disk space

- 150 MB

#### Clustering

- Exchange 2010/2013: DAGs
- Exchange 2007: SCC, CCR
- Exchange 2003 R2: SCC, CCR
- Exchange 2003 & earlier: SCC

### Services

#### Operating systems

- PureMessage Exchange 2003/2007/2010
  - Windows 2003 (32-/64-bit)
  - Windows Small Business Server 2003, 2008, 2011
  - Windows Server 2008 (32-/64-bit), 2008 R2
  - Windows Server 2012 (PureMessage for Exchange 3.1.3)
- PureMessage Exchange 2013
  - Windows Small Business Server 2008, 2011
  - Windows Server 2008 (64-bit), 2008 R2
  - Windows Server 2012
- Microsoft Exchange versions
  - Exchange 2003/2007/2010/2013

#### Microsoft SQL versions

- SQL 2005/2008\*/R2\*/2012
- SQL Mirroring

#### Memory

- PureMessage for Exchange 2003
  - 1 GB minimum, 2 GB recommended
- PureMessage for Exchange 2007/2010
  - 2 GB minimum, 4 GB recommended
- PureMessage for Exchange 2013
  - 4 GB minimum, 8 GB recommended

#### Disk space

- Up to 2 GB

## Try it now for free

Register for a free 30-day evaluation at [sophos.com/products](http://sophos.com/products).

United Kingdom Sales:  
Tel: +44 (0)8447 671131  
Email: [sales@sophos.com](mailto:sales@sophos.com)

North American Sales:  
Toll Free: 1-866-866-2802  
Email: [nasales@sophos.com](mailto:nasales@sophos.com)

Boston, USA | Oxford, UK  
© Copyright 2013. Sophos Ltd. All rights reserved.  
All trademarks are the property of their respective owners.

Sophos Datasheet 07.13v2.dNA

Sophos Premier Partner  
Symtrex Inc.  
264 Jane Street  
[www.symtrex.com](http://www.symtrex.com)  
[sales@symtrex.com](mailto:sales@symtrex.com) /866-431-8972

**SOPHOS**